

13th Annual Black & Gold Ball Generates Good Times, Raises \$49K!!

The 13th Annual Harvard Community Education Foundation Black & Gold Ball was an unqualified success! Led by co-chairs Doug Hawthorne and Sandy Nolan, the HCEF Board and volunteers pulled together a Ball that was one of our most successful ever!

While attendance, at 265, was down from our record attendance last year, the money raised



Clockwise from above: Guests socialize at the Black & Gold Ball; Emcee Orion Samuelson is either telling a story or encouraging attendees to give more to support Harvard education; guests peruse the many offerings in the silent auction.

at this year's Ball exceeded any recent Ball. **This year's Ball netted \$49,000** after expenses, including more than \$5400 from the Dutch auction. The Dutch auction proceeds will go toward mini-grants to support the District 50's libraries and library media. The remaining proceeds will go to support the Foundation's mini-grant program and to support the goal of building a \$1 million endowment by the end of 2010. For more information on the status of the HCEF endowment, and a rationale on why it's important, please see the sidebar article elsewhere on this page.

Supporters and Donors

The Black & Gold Ball wouldn't be the success it is without the generosity and support of our many donors. Because of the large number of businesses and individuals who are supporters of Harvard education

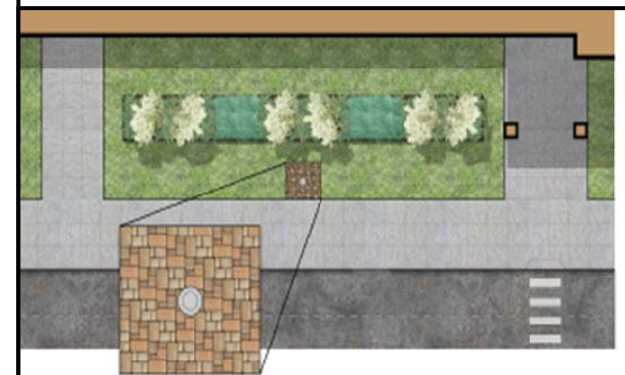
through their support of the Black & Gold Ball and the Harvard Community Education Foundation, we cannot possibly publish a complete list of supporters on these pages. **Please visit our website at www.hcefcusd50.org to see a complete list of our sponsors and donors.** Please make sure to thank those businesses and individuals for their support!

Save the Date!

Planning for the 14th annual Black & Gold Ball is already under way! Mark your calendars and make sure to save the date for **Saturday, November 13, 2010**. This year, we are moving the Black & Gold Ball to **the Abbey in Fontana, WI!** We are hoping the convenience of the closer location will allow even more of our friends and supporters to join us for the 2010 Ball!

Foundation Sells Paver Bricks at New School to Raise Funds, Create Memories

Want to celebrate the new school, honor someone special to you and support education in Harvard? Now thru May 1, 2010, you can order your personalized brick today to create a memory that will leave a visible and lasting mark. With your inscription you can honor a favorite person or family, commemorate a special occasion, or recognize your organization. By purchasing a brick, which will be placed around the flag pole at the new _____ Elementary School, you will allow the Harvard Community Education Foundation to fund the mini-grant program for students throughout Harvard School District 50. Bricks range in price from \$50 to \$500. For additional information please contact Becky Frost at 815-943-6438 or go to the Harvard Community Education Foundation website: www.hcefcusd50.org.



_____ Elementary School, you will allow the Harvard Community Education Foundation to fund the mini-grant program for students throughout Harvard School District 50. Bricks range in price from \$50 to \$500. For additional information please contact Becky Frost at 815-943-6438 or go to the Harvard Community Education Foundation website: www.hcefcusd50.org.

HCEF Investments Show Positive Gains; Assets Near \$900K

The Harvard Community Education Foundation's investments have done very well this year. Thanks to wise investment and careful management, our investments have grown 24% this year, basically gaining back investment losses from the last couple of years. With the proceeds from this year's Black & Gold Ball, HCEF's total assets, including its endowment and scholarship funds, is nearing \$900,000. The long-standing goal of achieving \$1 million in assets, including a healthy endowment, by the end of 2010 now appears to be within reach.

Why Have an Endowment?

Some have questioned whether HCEF should have an endowment or whether the money would be better spent directly on mini-grants or scholarships. A healthy endowment provides many benefits to a foundation and its beneficiaries, the students and teachers of Harvard.

Durability

The idea of creating a perpetual stream of financial support makes sense to people who see a similarity between retirement funds and endowments. They like the concept of a fund that is guarded and invested separately from other assets so the principal of the fund will stay intact.

Perpetual Gifts

Many persons see an endowment fund as a means to increase

their own regular giving. For example, an endowment fund of \$1 million can create an annual "gift" of \$50,000 to \$100,000 forever. This allows for an ongoing legacy of supporting Harvard education long past the impact of an individual donation. Over the years, HCEF has donated more than \$60,000 in m45 ini-grants and provided college scholarships to close to 100 students.

A Firm Foundation

Our endowments, properly invested, will allow the Foundation to pursue additional projects, reduce its reliance on fundraisers, and increase its ability to support larger or longer term opportunities for support. It will also allow HCEF to continue its annual support of mini-grants and scholarships even in times when donations are scarce.

Fiscal and Philanthropic Responsibility

By establishing and maintaining an endowment, HCEF is ensuring that it will be able to support Harvard students and teachers well into the future. An endowment is also seen as a sign of fiscal responsibility by many grantors.

Personal Satisfaction

There is something wonderfully fulfilling about doing something good that lasts, something that really makes a difference. Other kinds of giving are important and rewarding, and creating or adding to a fund that will benefit others for decades, even centuries, can be truly satisfying.



Mini-Grant Update

Recipients of 2009 HCEF Mini-grants are putting the funds to good use. Above, Karl K_____, a HHS senior and Suzy Hereley, HHS Art Teacher, are two of more than 20 volunteer artists working on the Washington School Mural; Below, more than 40 students participate every Friday in the Harvard Junior High Game Club in the school's library.



Harvard Community Education Foundation
P.O. Box 582
Harvard, IL 60033
www.hcefcusd50.org

Board Members

Officers

Linnea Kooistra, President
Sharon McMillan, Secretary
Verne Sission, Treasurer

Directors

Mimi Book
Linda Burkhart
Rosalinda Carreno
Pat Fisher
Doug Hawthorne
Phil Lehmann
Penny Martin
Sandy Nolan
Kathy Nolen
Jennifer Pihl
Lori Plane
Midge Roach
Lisa Tody
Jamie Wombacher
Molly Yates
Ex-Officio Members
Dr. Lauri Tobias
Bill Clow

Mission

to encourage the Harvard community to support quality education of its children by enriching and expanding learning opportunities.

HCEF, Harvard High School Induct 5 into Hall of Fame

Harvard High School and Harvard Community Education Foundation teamed up to create the new Harvard High School Hall of Fame. In November, the inaugural class of five were inducted in a ceremony in front of High School students and community supporters. The five inductees:

- Margaret Pihl Kistler, Class of 1933,
- Bill Magnuson, Class of 1951,
- Dr. Penelope LeFev Blake, Class of 1975,
- Neil Schultz, Class of 1975 and
- Karen Brook, Class of 1995

were all nominated by community members. Nominations are currently being taken for the Hall of Fame Class of 2010.

Nomination forms and nomination criteria are available on the Foundation

website at www.hcefcusd50.org.



2009 Harvard High School Hall of Fame inductees or their representatives receive commemorative plaques.